

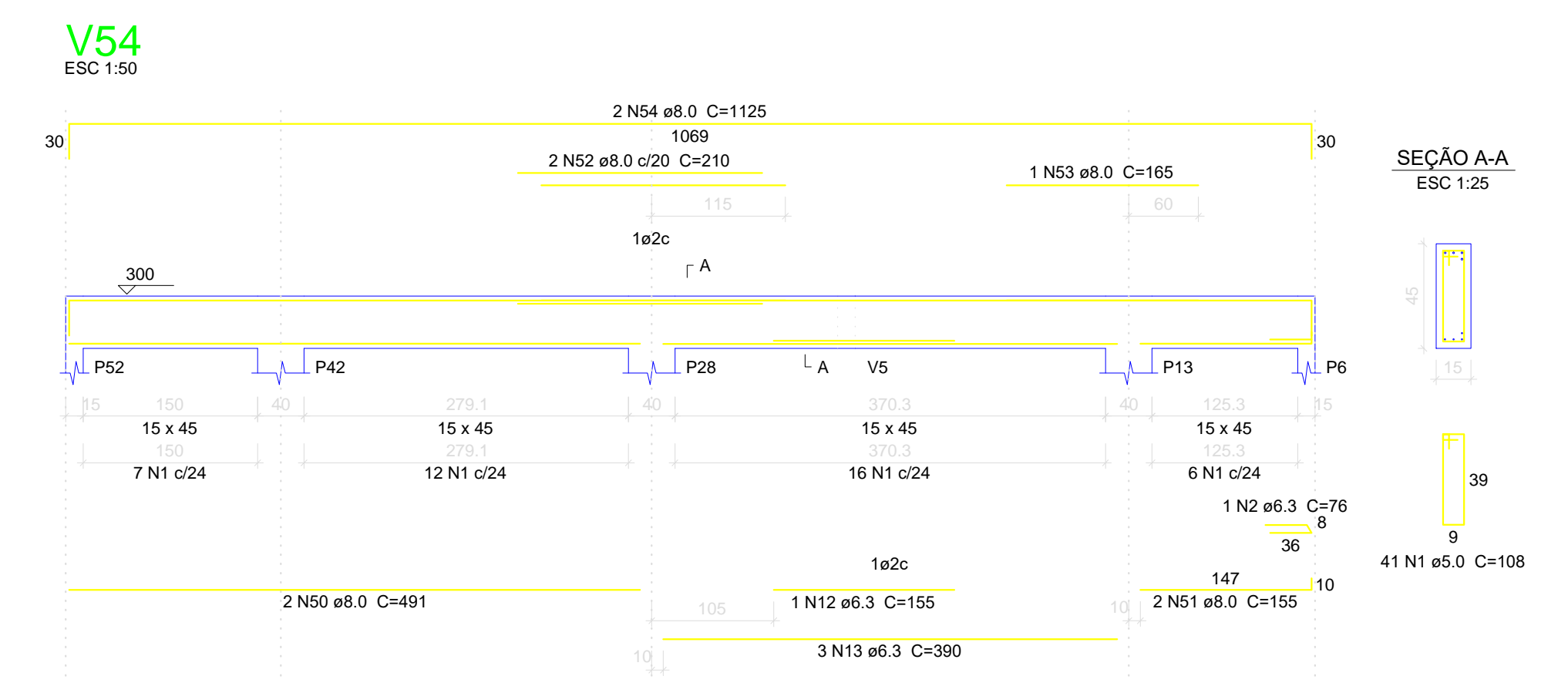
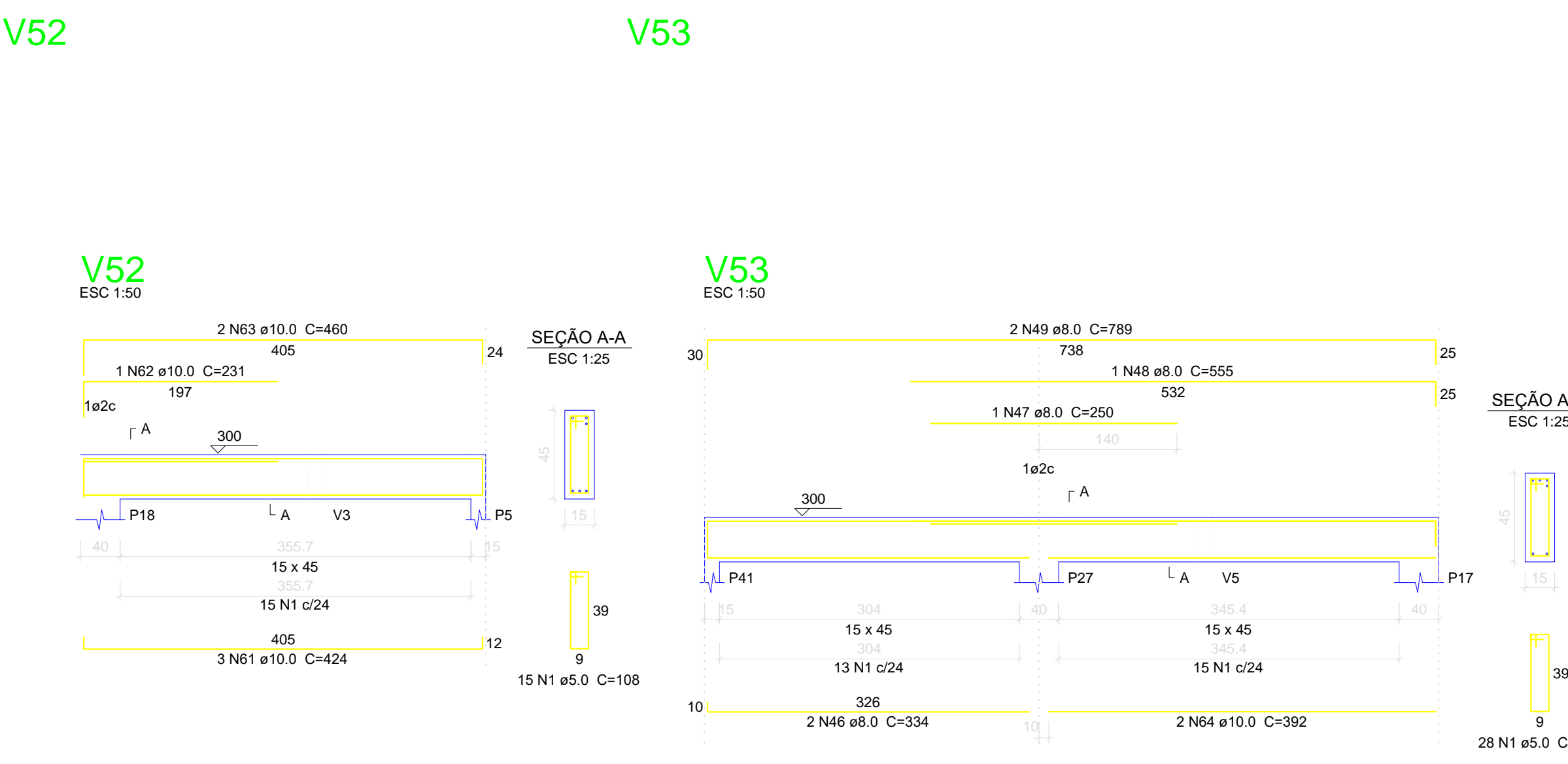
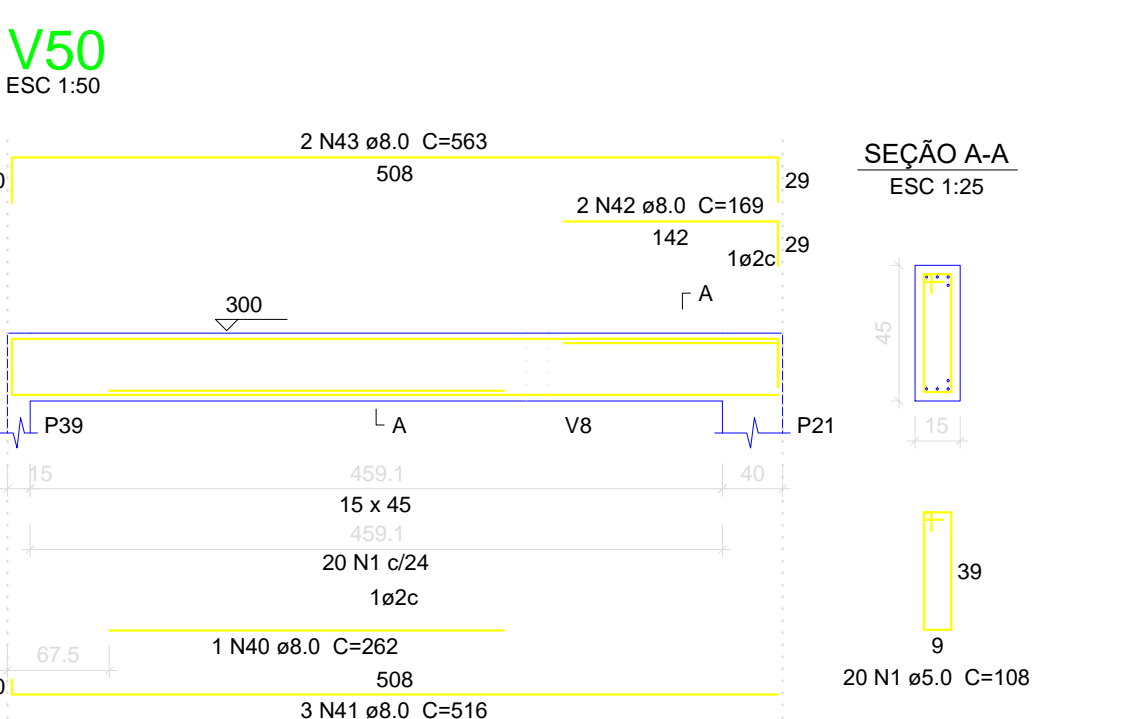
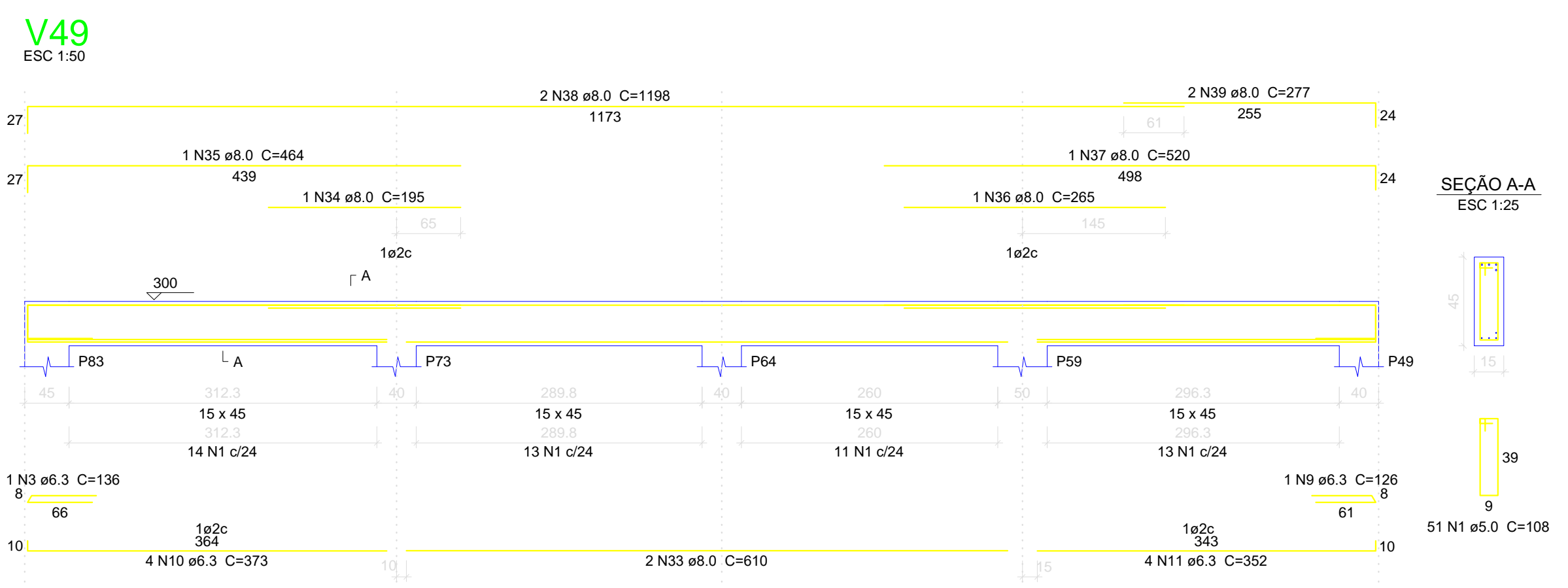
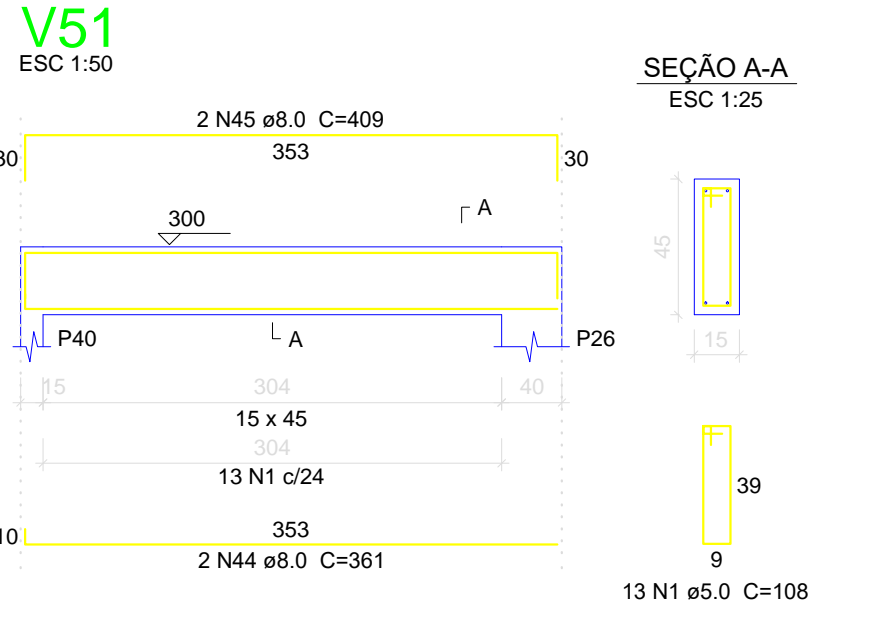
Relação do aço

AÇO	N	DIAM (mm)	QUANT (Barras)	UNIT (cm)	C.TOTAL (cm)
CA60	1	5.0	351	108	37908
CA50	2	6.3	2	76	152
	3	6.3	3	136	408
	4	6.3	4	326	1304
	5	6.3	2	162	324
	6	6.3	4	207	828
	7	6.3	2	138	276
	8	6.3	7	198	1386
	9	6.3	1	126	126
	10	6.3	4	373	1492
	11	6.3	4	352	1408
	12	6.3	1	155	155
	13	6.3	3	390	1170
	14	8.0	2	353	706
	15	8.0	3	165	495
	16	8.0	1	210	210
	17	8.0	4	398	1592
	18	8.0	2	912	1824
	19	8.0	4	969	3876
	20	8.0	2	448	896
	21	8.0	2	932	1864
	22	8.0	1	633	633
	23	8.0	1	653	653
	24	8.0	2	703	1406
	25	8.0	5	87	435
	26	8.0	3	137	411
	27	8.0	3	361	1083
	28	8.0	3	160	480
	29	8.0	1	205	205
	30	8.0	2	310	620
	31	8.0	2	222	444
	32	8.0	2	222	444
	33	8.0	2	610	1220
	34	8.0	1	195	195
	35	8.0	1	464	464
	36	8.0	1	265	265
	37	8.0	1	520	520
	38	8.0	2	1198	2396
	39	8.0	2	277	554
	40	8.0	1	262	262
	41	8.0	3	516	1548
	42	8.0	2	169	338
	43	8.0	2	563	1126
	44	8.0	2	361	722
	45	8.0	2	409	818
	46	8.0	2	334	668
	47	8.0	1	250	250
	48	8.0	1	555	555
	49	8.0	2	789	1578
	50	8.0	2	491	982
	51	8.0	2	155	310
	52	8.0	2	210	420
	53	8.0	1	165	165
	54	8.0	2	1125	2250
	55	10.0	2	374	748
	56	10.0	1	653	653
	57	10.0	1	673	673
	58	10.0	1	713	713
	59	10.0	1	733	733
	60	10.0	2	947	1894
	61	10.0	3	424	1272
	62	10.0	1	231	231
	63	10.0	2	460	920
	64	10.0	2	392	784
	65	12.5	2	705	1410
	66	12.5	2	433	866

Resumo do aço

AÇO	DIAM (mm)	C.TOTAL (m)	PESO + 10% (kg)
CA50	6.3	90.3	24.3
	8.0	358.9	155.7
	10.0	86.3	58.5
	12.5	22.8	24.1
CA60	5.0	379.1	64.3
PESO TOTAL (kg)			
CA50		262.6	
CA60		64.3	

Volume de concreto (C-25) = 6.04 m³
Área de forma = 93.92 m²



PROJETO DE ENGENHARIA PRANCHA 12/14

OBJETO: Projeto Estrutural Hospital Municipal
END: Rua 16 nº 1.063 - Bairro Nacib Jabur Maluf - Itapagipe/MG
PROP: Município de Itapagipe-MG
CPF/CNPJ: 21.226.840/0001-47

Quadro de assinaturas:

Proprietário CPF/CNPJ	Benice Nery Maia Prefeita Municipal
Resp. Técnico CPF/CNPJ	Secretaria Municipal de Obras Rodolfo Costa Agreli CREA/SP:5070412203-LP

Aprovação:

